



Like any other production company SCP deploys production professionals, equipment and other assets to custom assemble a production project. Unlike legacy production models, SCP takes advantage of state production incentives which have absolutely no process compromise; just straight line savings on the same cost elements that go into every production. And further leveraging production assets continue to reduce costs while allowing for more creative freedom and options.

The industry freelance pool has been developing for over 40 years and it includes all areas of production from equipment to stages to set designers to directors. SCP integrates the key personnel and support to produce at the highest quality under the most cost effective terms. The company enjoys long term banking and financial relationships, diversified cash flows, a balance sheet able to support almost any production requirement and scalable purchasing power to acquire vendor goods and services at volume prices.

Based in Manhattan, SCP utilizes resources in the production incentive states of North Carolina, Georgia, Louisiana and other production incentive states. SCP also has offices in Los Angeles, Europe and Argentina. Available producers with decades of national and international production experience give an SCP production a sophisticated working knowledge of all processes.

GEORGIA RESOURCES

STUDIOS

SCP accesses various Georgia studio resources including the Screen Gems facilities in Atlanta. Their five existing studios range from 10,000 square feet to 35,000 square feet with more than 50,000 additional square-feet for lighting and grip, mill shops and production support services. The complex offers more than 100,000 square feet of studio space with full support space. Georgia is a right to work state with a 20% tax credit incentive which rises to 30% under certain conditions.



LOCATIONS

Atlanta offers distinctive urban settings in addition to a wide demographic. The ethnic and cultural diversity of Atlanta's talent base and crew further expands the studios' portfolio of options for media producers and directors. The Hartsfield-Jackson Atlanta International Airport offers multiple non-stop flights to and from New York City and Los Angeles. Outside of Atlanta, the diversity of location filming opportunities is significant. Georgia presents key demographic looks from middle class American to rustic to urban to the upper class. Rural settings are close to Atlanta and there is year round greenery even in January in Savannah and the Georgia coast. The spectrum of location filming opportunities in Georgia rivals that of any state in the U.S.





Location fees and associated production costs are significantly less expensive in Georgia compared to traditional NY and LA locations. For more Georgia location information visit: www.georgia.org/GeorgialIndustries/Entertainment/FilmTV/Locations/Pages/default.aspx

ON-SCREEN TALENT

The case studies include casting in *both* the original production city and in Georgia where applicable. This greatly increases on-screen talent choices for a project. Talent casting in GA is drawn from a large pool in the central eastern seaboard area. In addition to the Atlanta, casting can be drawn from the Carolinas, New Orleans and Miami.

GEORGIA PRODUCTION CREDITS

More than 700 film and television projects have shot in Georgia. Recently these include: *The Blind Side, I Can Do Bad All By Myself, The Last Song, Zombieland, Get Low, The Crazyes, Life As We Know It, Due Date, The Lottery Ticket, Halloween 2, The Greening of Whitney Brown and My Super Psycho Sweet 16*. Other films shot in Georgia include: *Madea Goes to Jail, Fireproof, We Are Marshall, Stomp the Yard, Diary of a Mad Black Woman, Driving Miss Daisy, The Gospel, Sweet Home Alabama, The Fighting Temptations, Forrest Gump*, the Emmy Award-winning HBO film *Warm Springs, In the Heat of the Night* and *The Dukes of Hazzard*. For a complete list:

www.georgia.org/GeorgialIndustries/Entertainment/FilmTV/Pages/GeorgiaFilmography.aspx

LOUISIANA RESOURCES

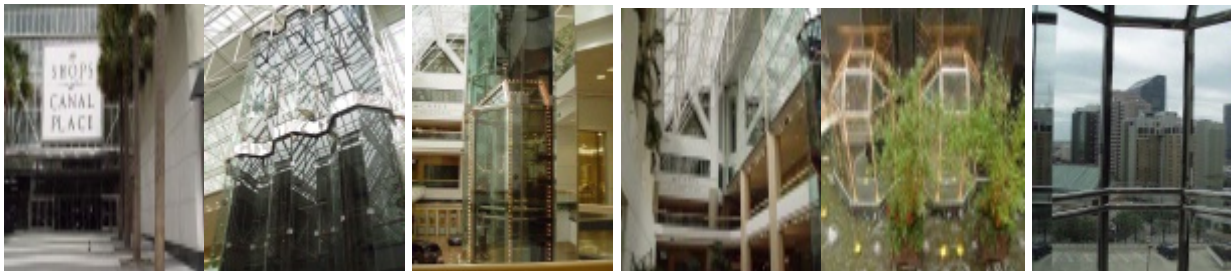
STUDIOS

SCP accesses the many Louisiana studios including Millennium Studios in downtown Shreveport. Millennium offers two sound stages, a construction mill, special effects mill, turn key production offices, star rooms, green room, hair/make up, etc. A total of almost 30,000 square feet of studio space is supported by 12,000 square feet of office space, 30,000 square feet of props/set decorations/specialty items/etc., 5,000 square feet of wardrobe space and a large selection of location vehicles.



LOCATIONS

Louisiana locations, from the typical swamp & plantation home to major cities & towns, can double for Anywhere, USA. The mild climate is conducive to productions year-round and Louisiana residents personify southern hospitality, welcoming productions of all sizes. A place of rich cultural history and great source of pride for its citizens, Louisiana truly has it all.



ON-SCREEN TALENT

Casting is drawn from a large pool in the south eastern seaboard area but Atlanta and Texas also participate.

LOUISIANA PRODUCTION CREDITS

Recent Louisiana productions include: *Battle Los Angeles*, *Green lantern* (segments), *Battleship*, *Colombiana*, *Harry Potter and the Deathly Hallows – Part 2*, *Haywire*, *Inside Out*, *Love Wedding Marriage*, *The Philly Kid*, *The Twilight Saga: Breaking Dawn – Part 2* and *Transit*. For a complete list:

http://www.louisianaentertainment.gov/film/films_by_year.cfm

NORTH CAROLINA RESOURCES

STUDIOS

SCP has offices in Charlotte, Raleigh and Wilmington. Studio access is available in all these cities. Using Wilmington as a studio example, SCP utilizes the largest U.S. television and motion picture production facility outside of California. Located just off the Atlantic Ocean the studios are close to many geo and demographic filming opportunities. The complex offers a 50 acre lot, 145,000 square feet of studio space spread over 10 stages, the third largest stage in America, two water tanks, special effects staging, full compliment lighting and grip in addition to complete production support facilities. North Carolina is a right-to-work state with a 25% film incentive cash rebate.



LOCATIONS

The spectrum of location filming opportunities in North Carolina rivals that of any state in the U.S. North Carolina's diverse geographical features range from miles of pristine beaches to "anywhere urban" to classic USA suburban to stunning mountain and memorable rural locations. The climate is temperate and always green in sections for virtual year-round shooting and northeast seasonal in other parts of the state.





Location fees and associated production costs are significantly less expensive in North Carolina compared to traditional NY and LA locations. For more location information visit: nc.reel-scout.com/loc_search.aspx

ON-SCREEN TALENT

The case studies include casting in *both* the original production city and in North Carolina where applicable. This greatly increases on-screen talent choices for a project. Talent casting in NC is drawn from a large pool in the central eastern seaboard area. In addition to the Carolinas, casting can be drawn from Atlanta, New Orleans and Miami. Fincannon and Associates casting maintains offices throughout North Carolina, in Atlanta and New Orleans. Fincannon has cast over 125 feature films and projects for every major studio including the recently released *"Green Lantern"* for Warner Bros Pictures and director Martin Campbell. They have cast over 200 episodic shows, 125 movies of the week, hundreds of commercials and 6 mini-series. They own two EMMY awards for "Outstanding Casting" and three Casting Society of America ARTIOS awards. Fincannon is affiliated with the Academy of Television Arts and Sciences and the Casting Society of America.

NORTH CAROLINA PRODUCTION CREDITS

North Carolina has over 400 movie and television show to its credit including currently filming *"Iron Man 3"*, *"Hunger Games"* and *"Journey 2"*. Other credits include *"The Secret Lives of Bees"*, *"The Water is Wide"*, *"Blue Velvet"*, *"Eastbound and Down"* *"Dawson's Creek"* and *"Little Britain USA"*. Hundreds of commercials have produced in NC for many top marketers and ad agencies.

